



Managing and monitoring wildlife HCVs in Congo Basin

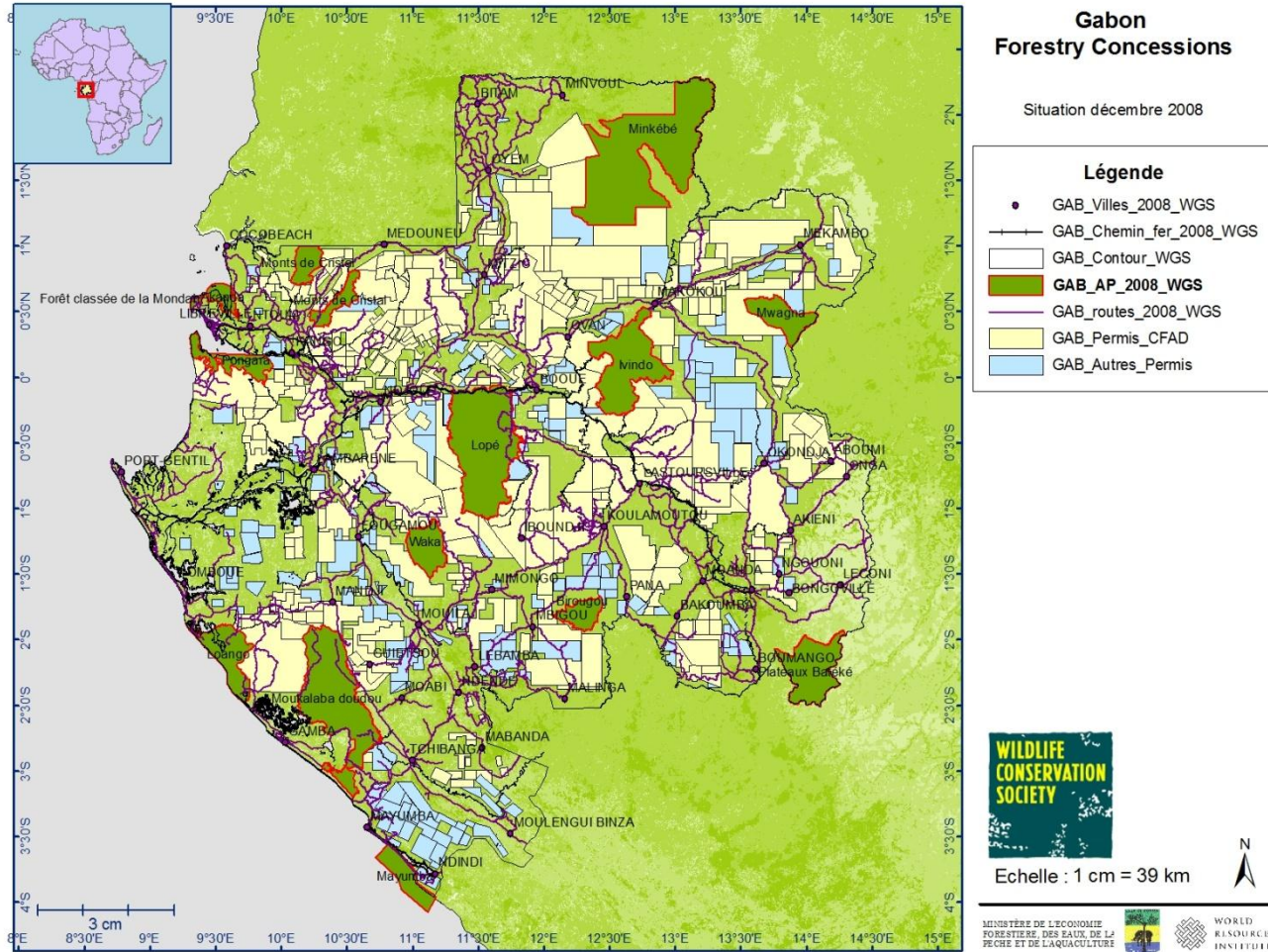
Tim Rayden

WCS Gabon, June 2011

Introduction

- Areas where logging is practised
 - Remote and under-studied
 - Limited baseline knowledge of wildlife
- Direct and indirect impacts of logging activity
- High conservation value species
- The need for robust monitoring
- Techniques under development

Gabon forestry concessions



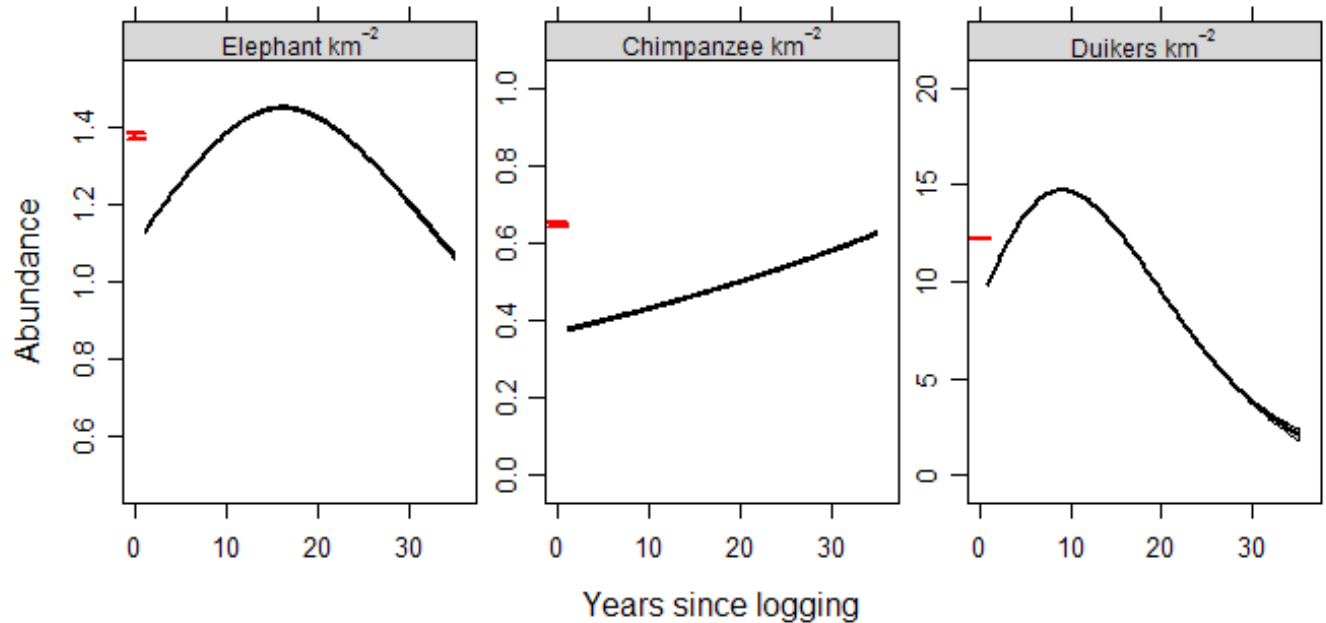
Direct impacts of logging



Direct impacts

- Differences in responses of different animals to logging disturbance

- Données PROGEPP



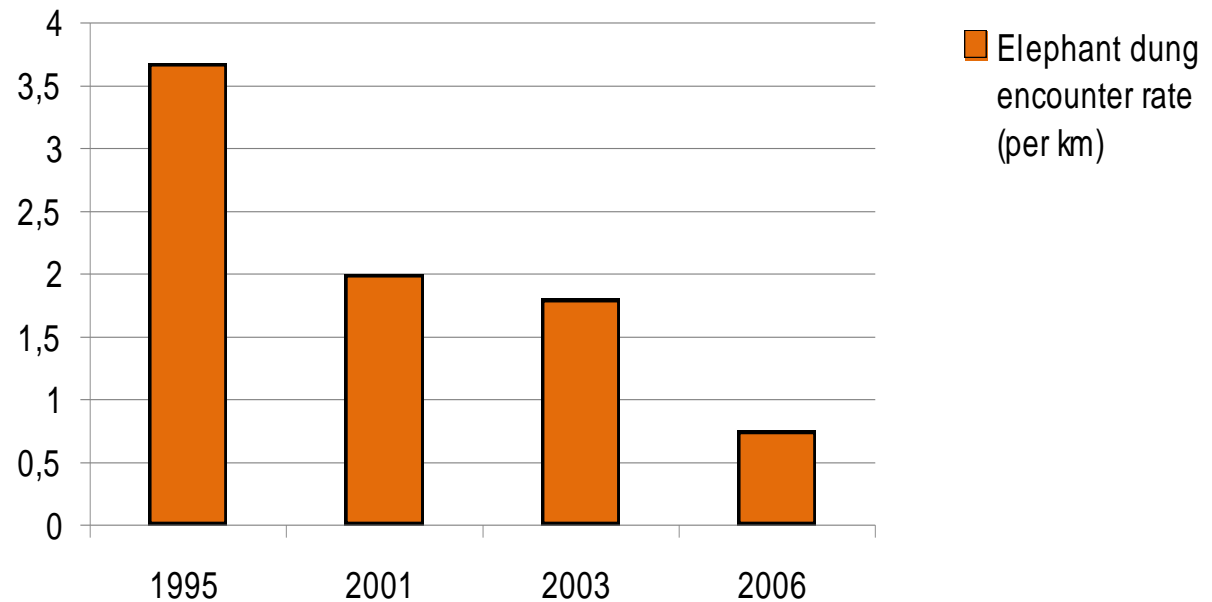


Indirect impacts

- Increasing population
- Increasing market for bushmeat
- Increased access for commercial meat and ivory hunting

Elephant poaching

- Decline in elephants from a non-certified forest concession in Republic of Congo
- (Source: WCS)





High Conservation Value species

- Significant concentrations of endangered species
 - HCV 1
- Most natural species in natural patterns of distribution & abundance
 - HCV 2

Maintain or enhance

- Precautionary approach:
 - No negative impact on HCV species
 - Evaluate and quantify potential impacts
 - Mitigation measures in place
 - Monitoring to test effectiveness of mitigation
 - *Precautionary approach means effective and continual monitoring of impacts, with adaptive management*

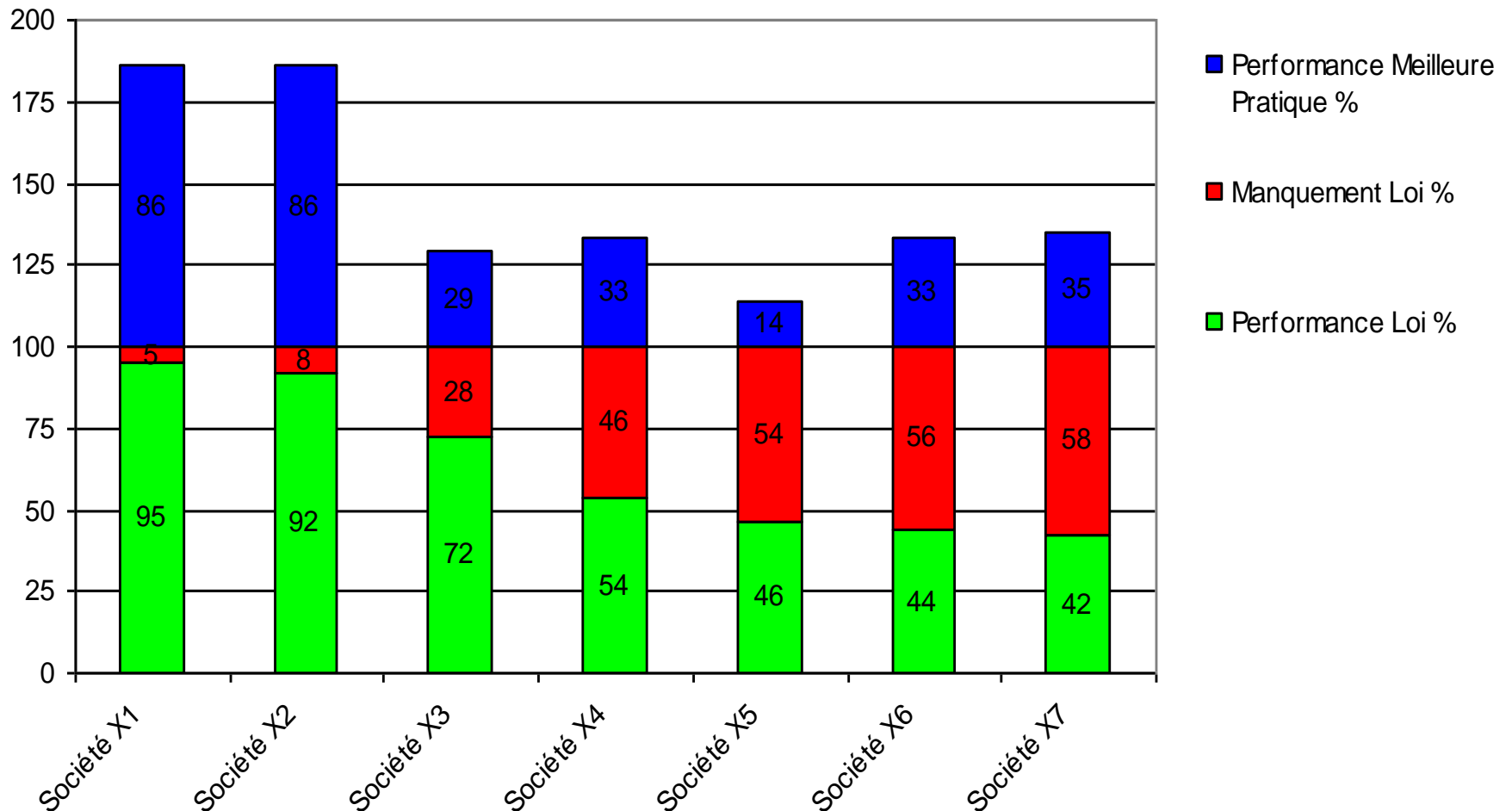
- Recognise the need for good monitoring
- Be clear about what monitoring is necessary

2 levels of monitoring

- ***Operational monitoring:***
 - Checking that operational procedures are followed
- ***Strategic monitoring:***
 - Checking that the strategic objective is being met
- Certified companies usually quite good at the first one...

Wildlife management study

Résultats préliminaires des 7 sociétés déjà évaluées, classement par niveau de respect et d'application de la Loi en ce qui concerne la gestion de la faune dans les CFADs

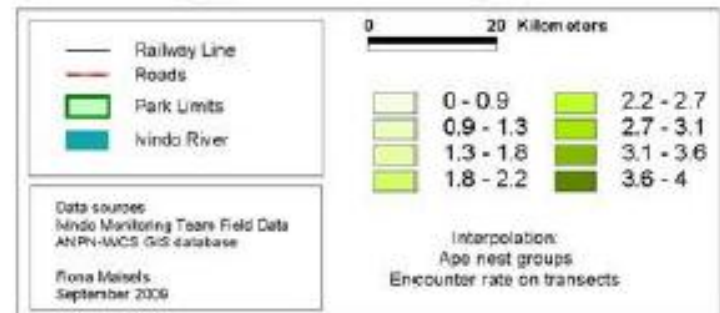
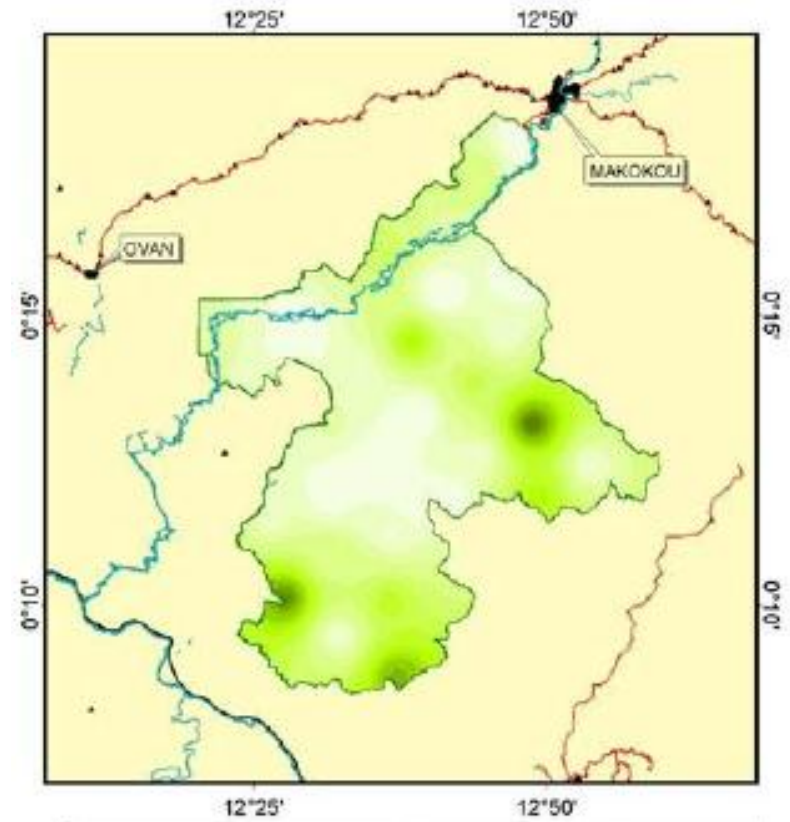
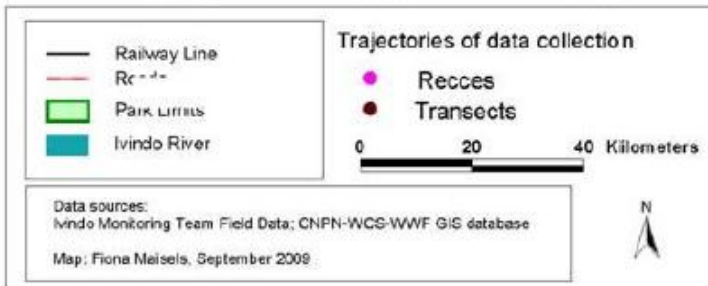
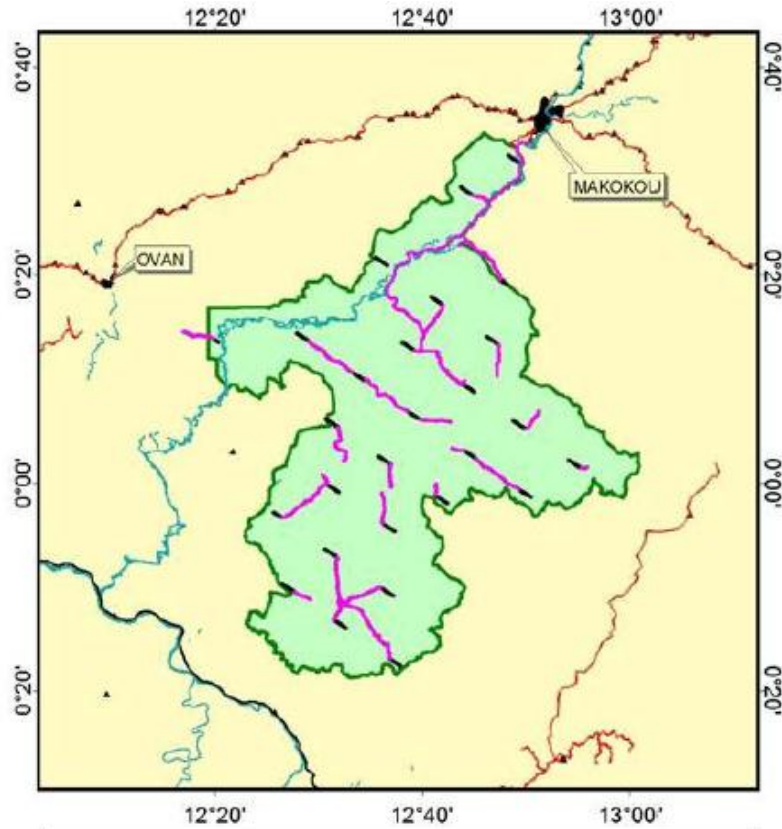




Strategic monitoring of wildlife

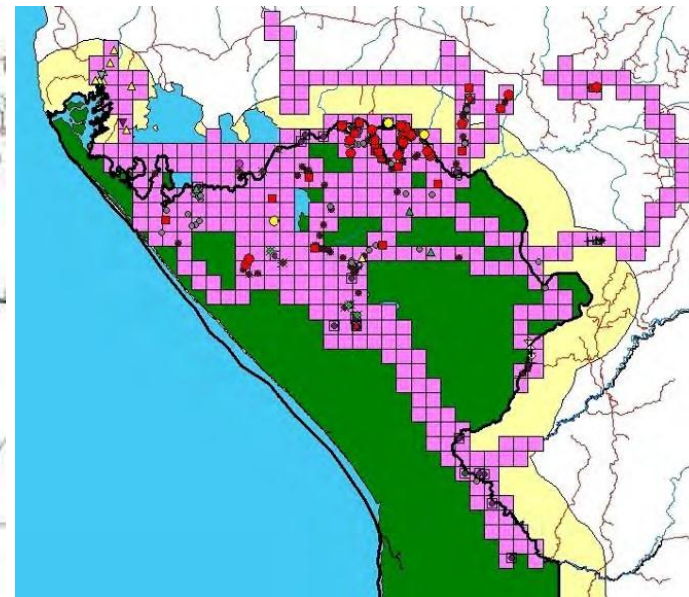
- 4 approaches used by WCS in Congo Basin:
 - Systematic transect surveys
 - Patrol data-basing
 - Acoustic monitoring
 - Camera trapping

Systematic transect surveys

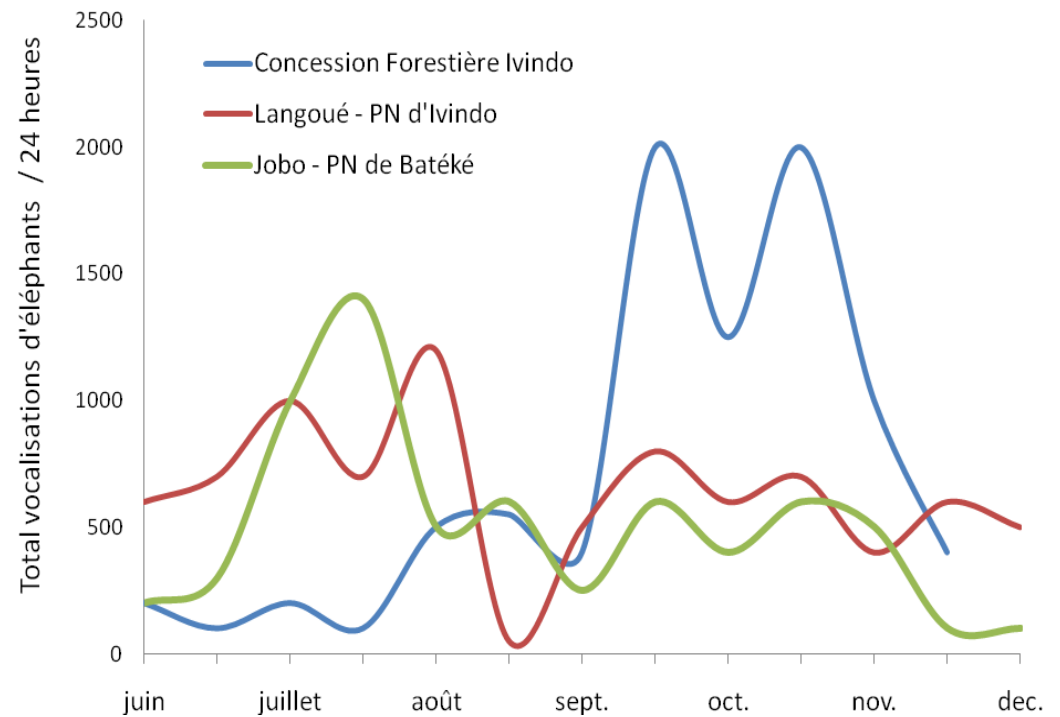


Data-basing of patrols

- Management Information System (MIST)



Acoustic monitoring



Camera trapping

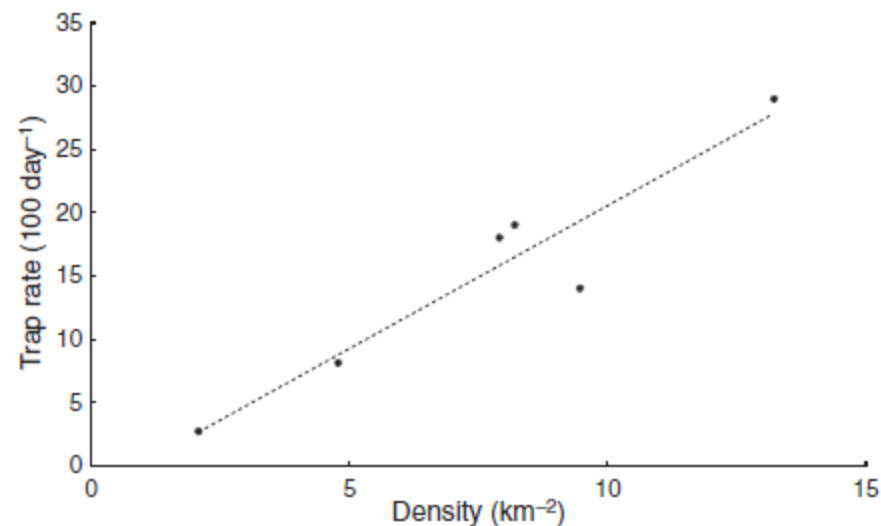


Fig. 2. Camera trapping photographic rates plotted against densities estimated from line transect counts of Harvey's duiker, recorded along six study sites in the Udzungwa Mountains of Tanzania (dashed line indicates linear regression; $R^2 = 0.90$).

Communicative results!



DLCcovert.com

05-12-2011 06:05:28



DLCcovert.com

05-12-2011 03:24:37